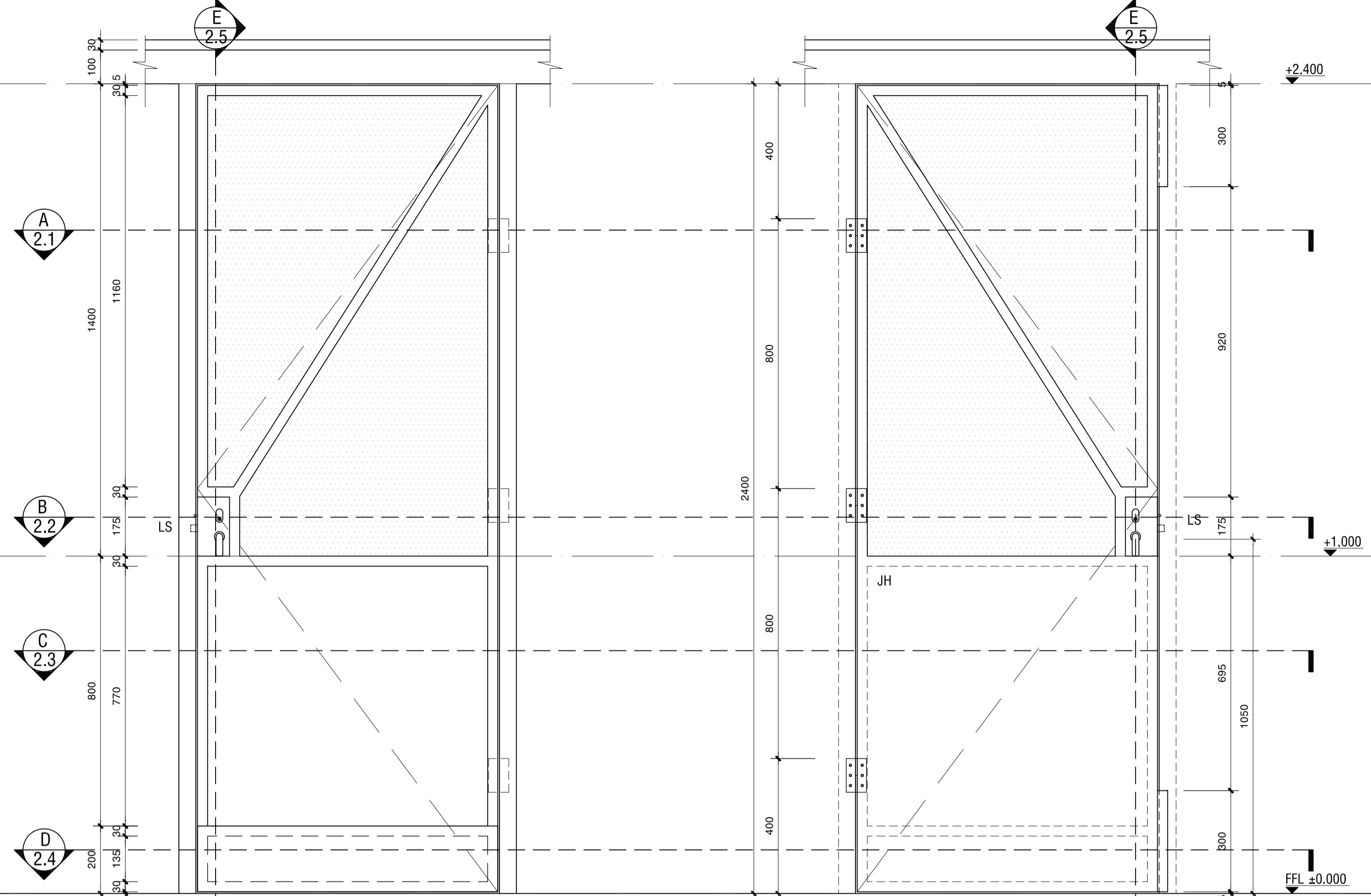


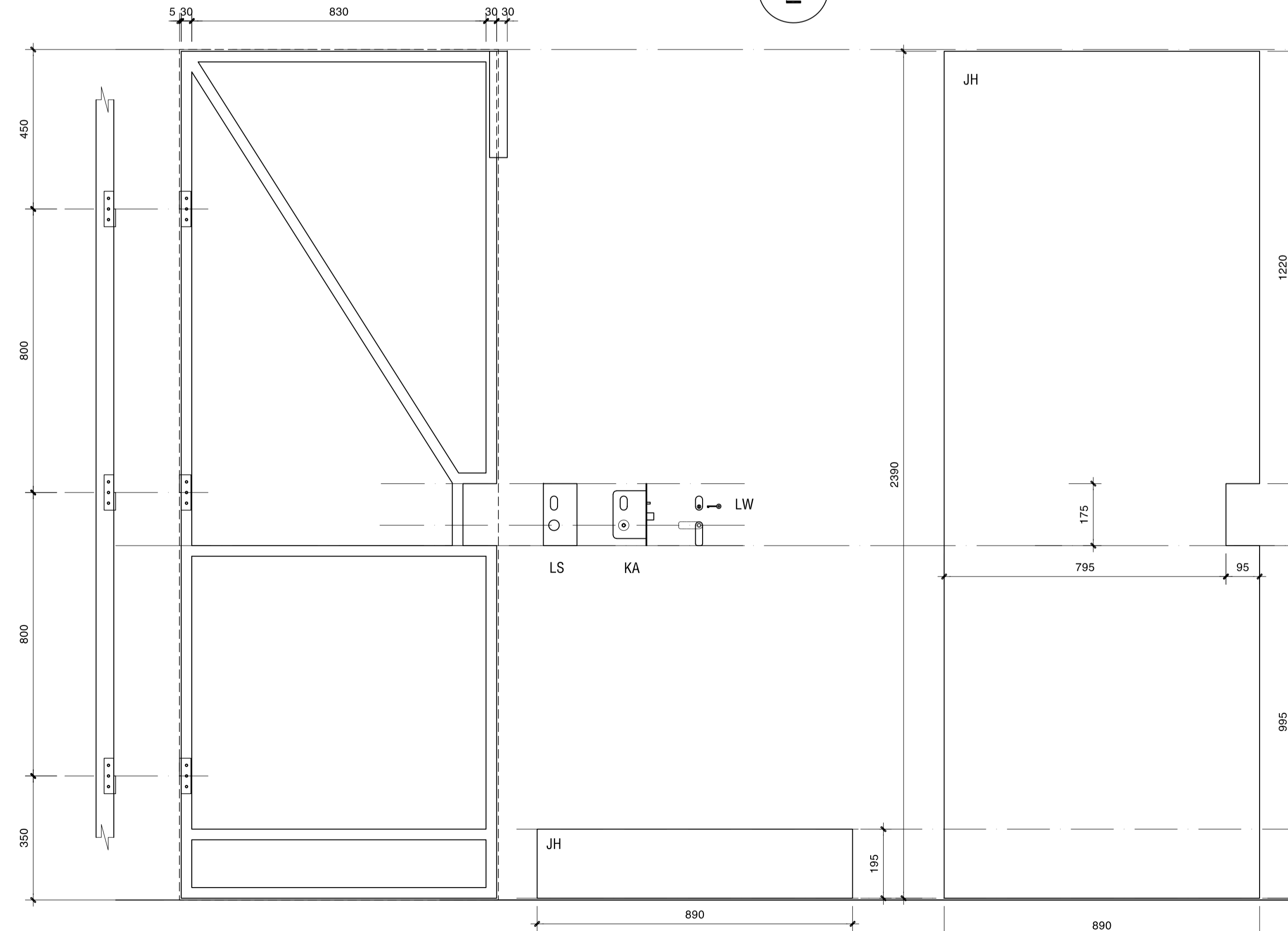
1.8 DOOR 2 - OUTSIDE CLADDING 1:10

1.7 DOOR 2 - FRAMING & PARTS 1:10



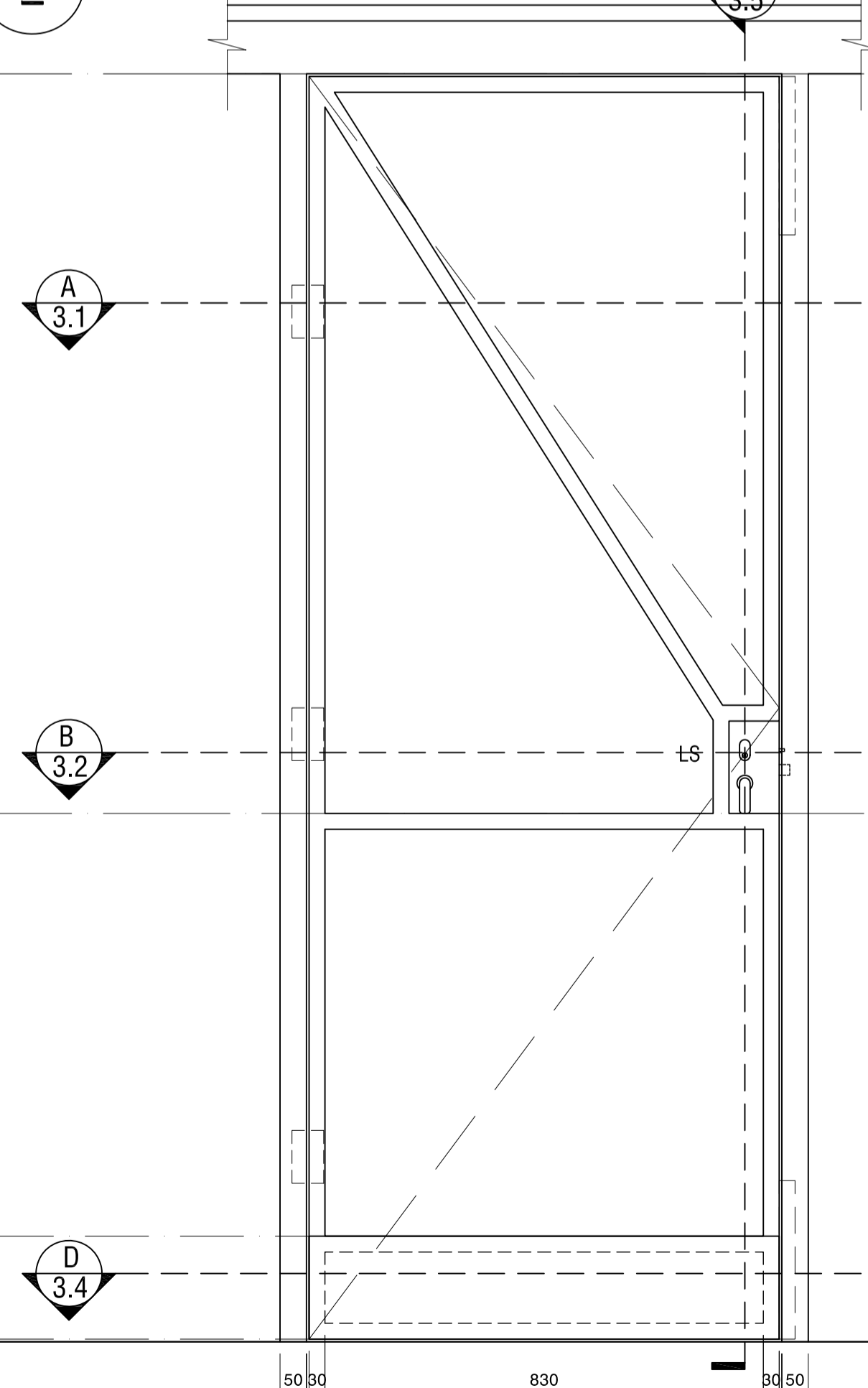
1.6 DOOR 2 - INSIDE ELEVATION 1:10

1.5 DOOR 2 - OUTSIDE ELEVATION 1:10

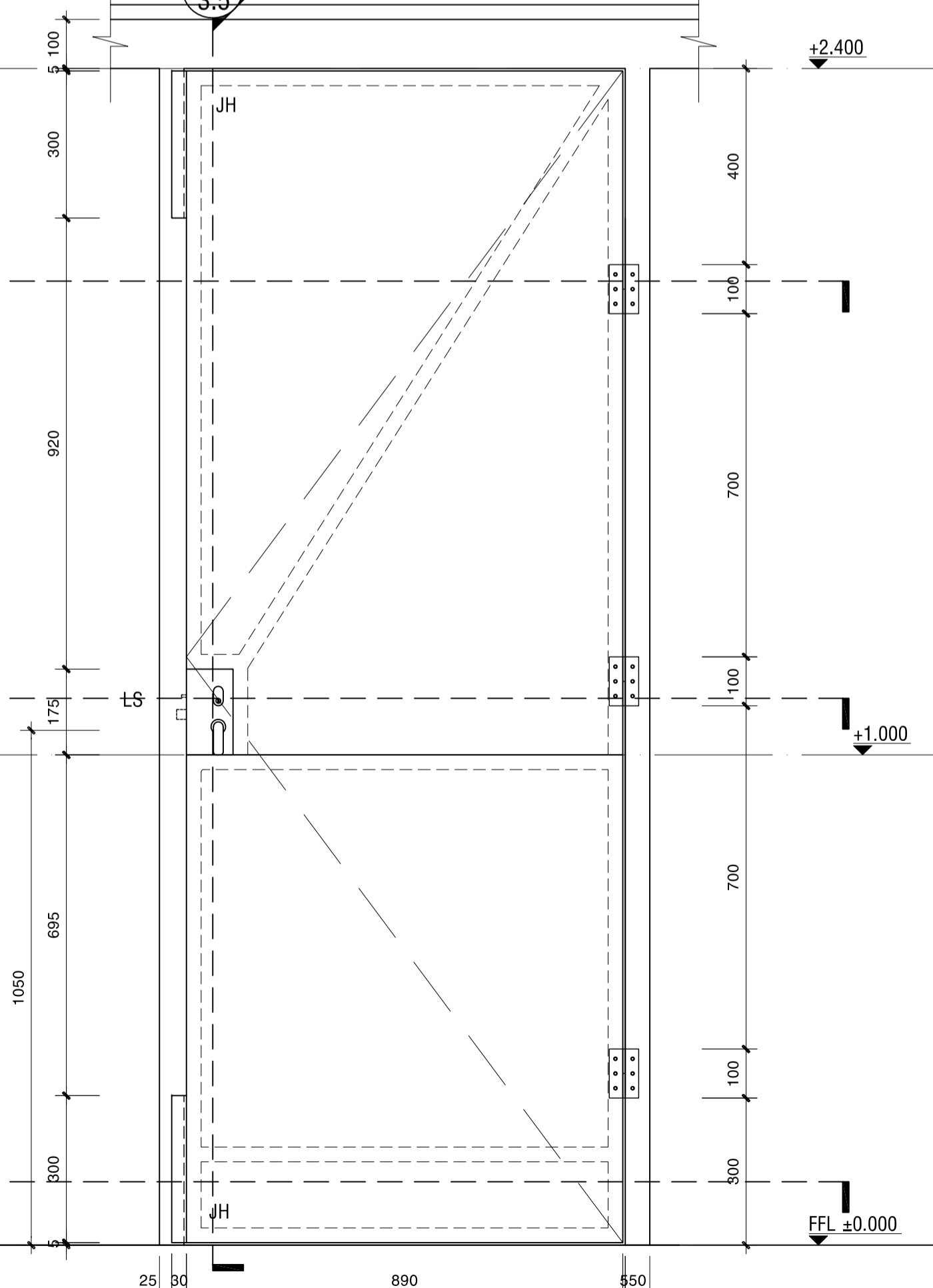


1.4 DOOR 1 - FRAMING & PARTS 1:10

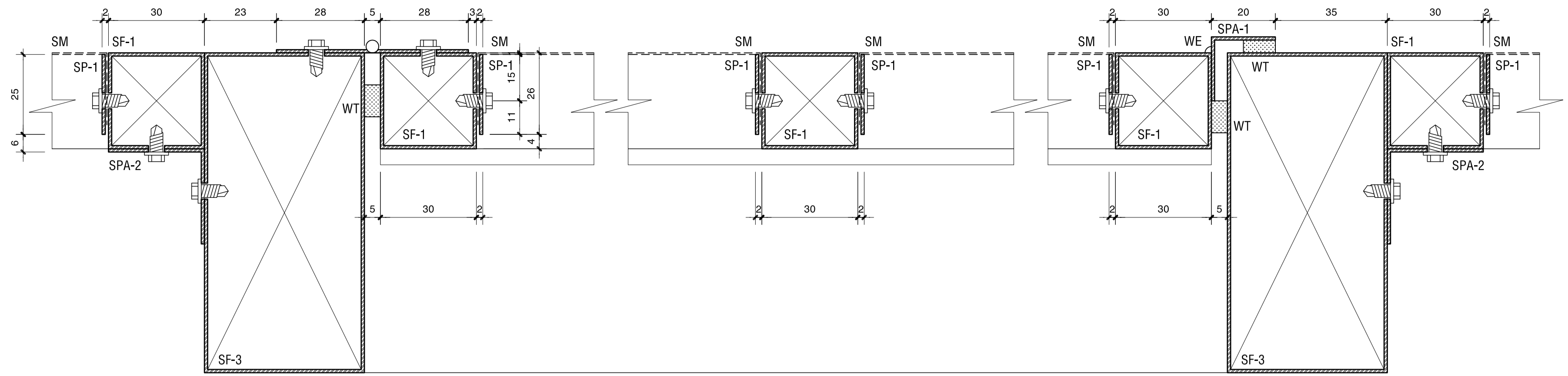
1.3 DOOR 1 - OUTSIDE CLADDING 1:10



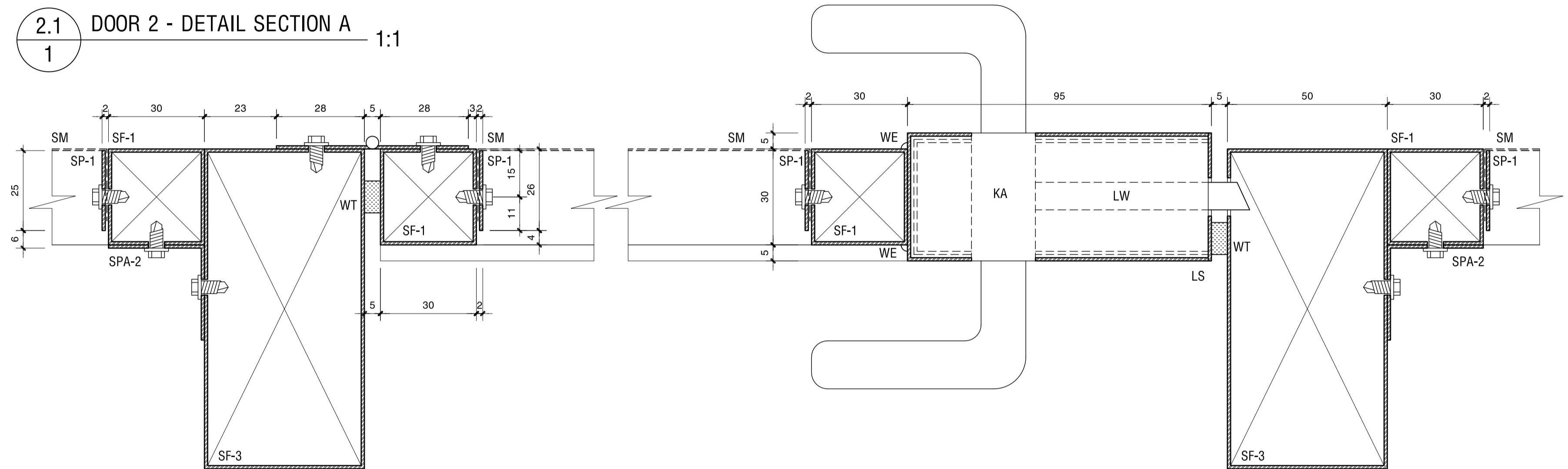
1.2 DOOR 1 - INSIDE ELEVATION 1:10



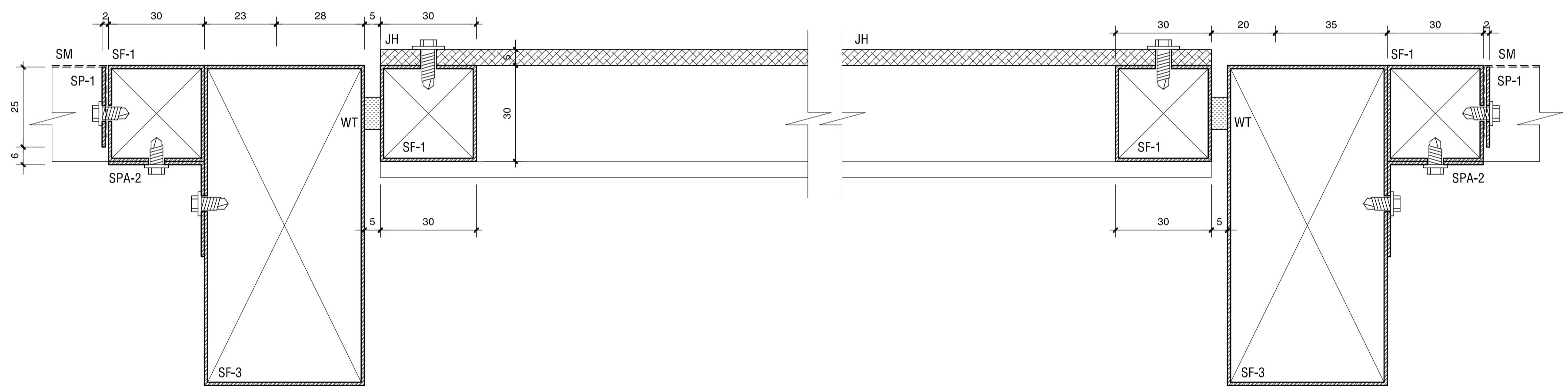
1.1 DOOR 1 - OUTSIDE ELEVATION 1:10



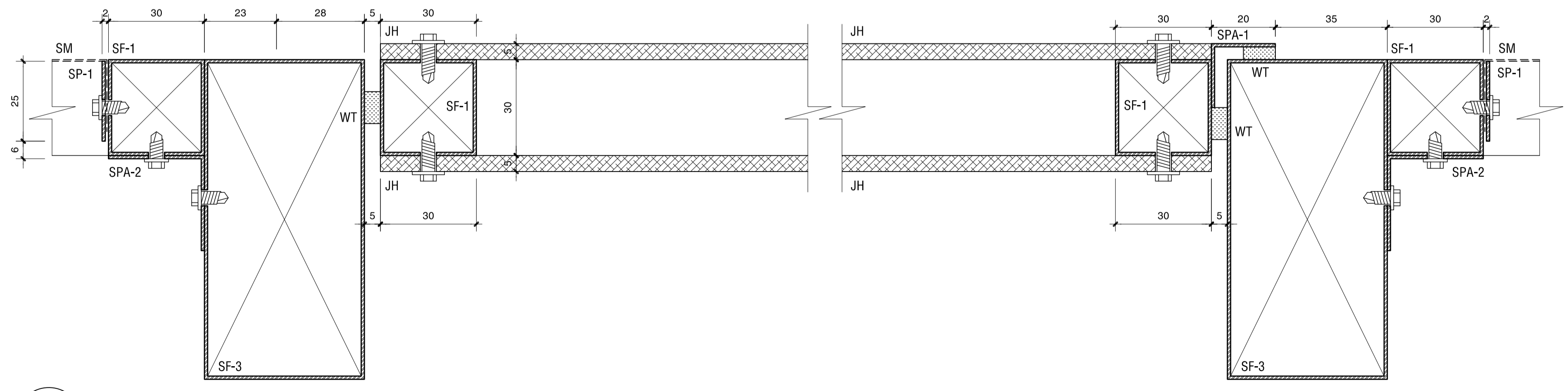
2.1 DOOR 2 - DETAIL SECTION A 1:1



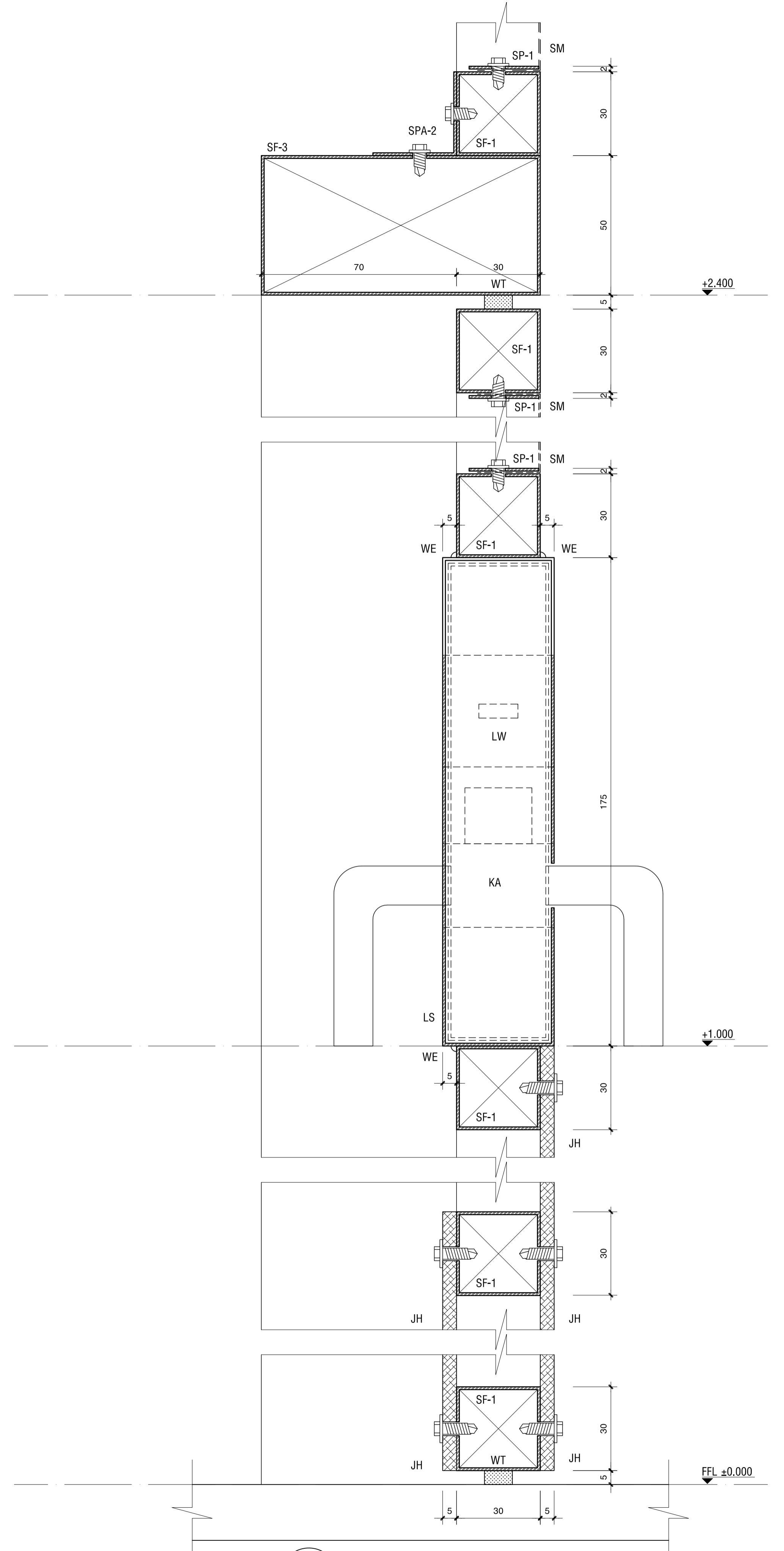
2.2 DOOR 2 - DETAIL SECTION B 1:1



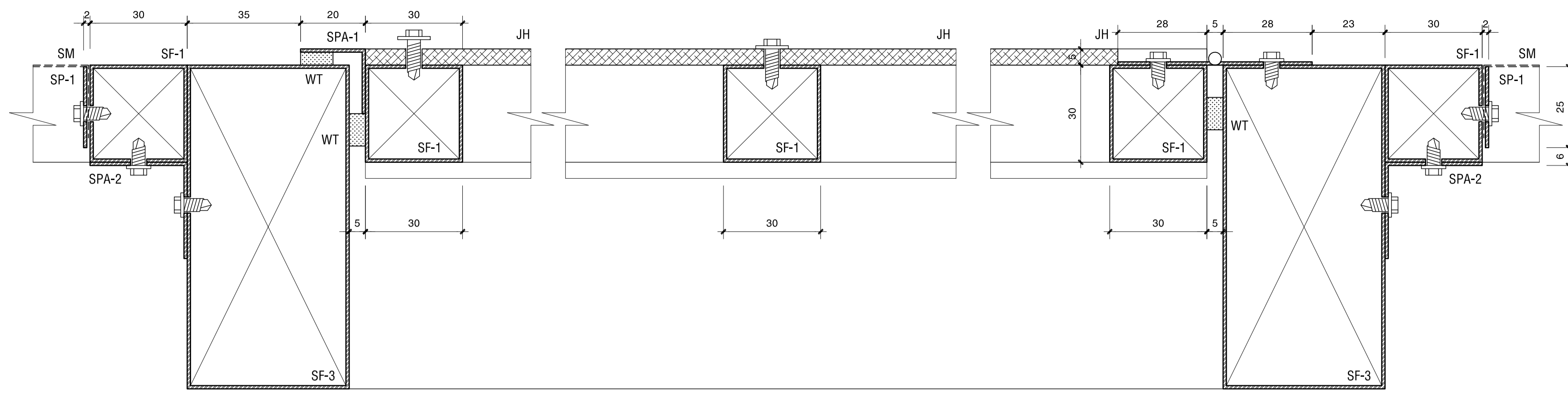
2.3 DOOR 2 - DETAIL SECTION C 1:1



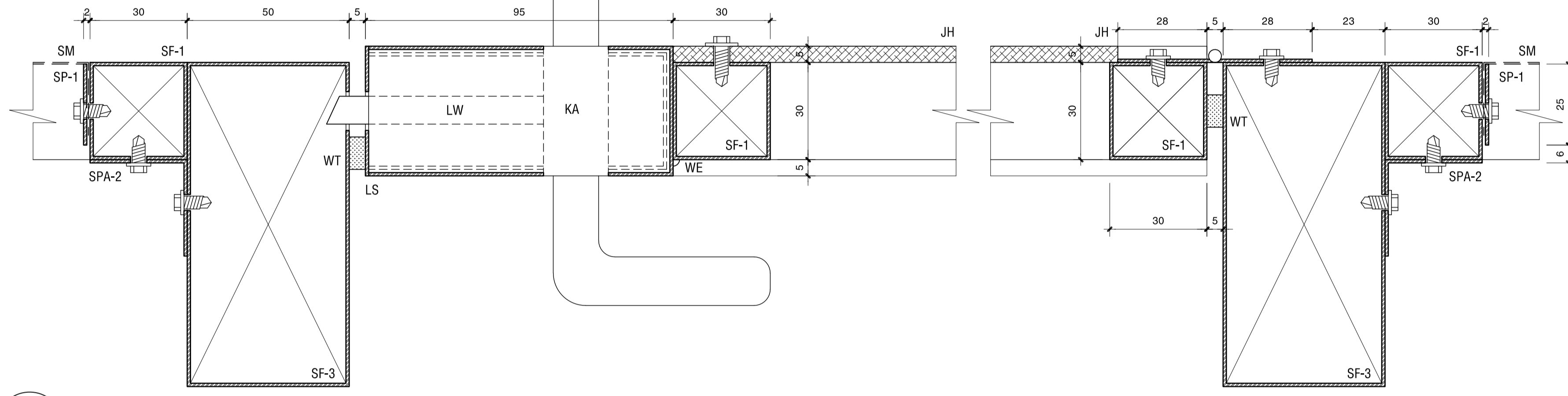
2.4 DOOR 2 - DETAIL SECTION D 1:1



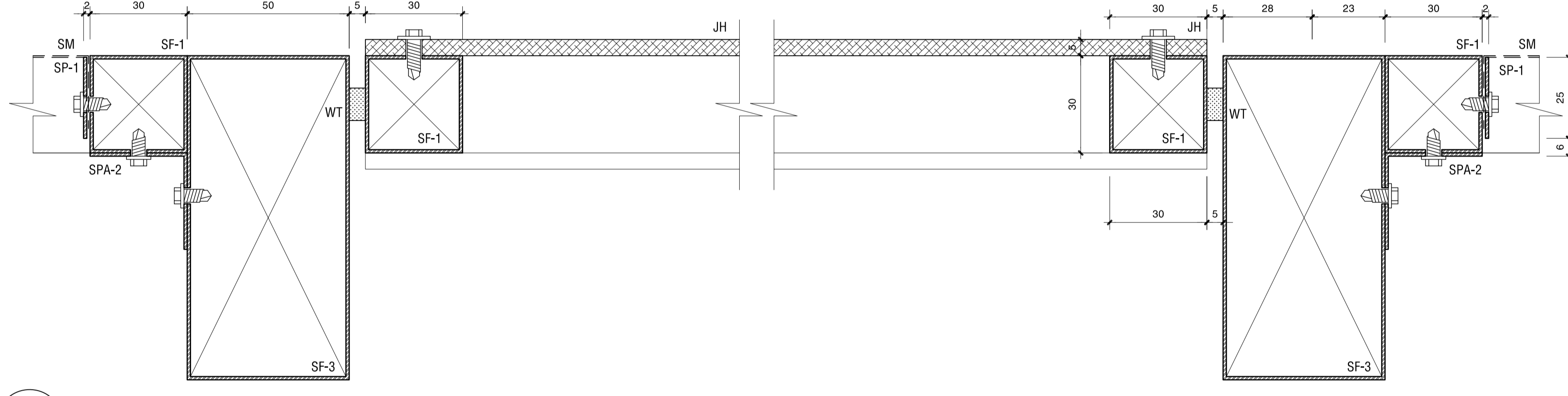
2.5 DOOR 2 - DETAIL SECTION E 1:1



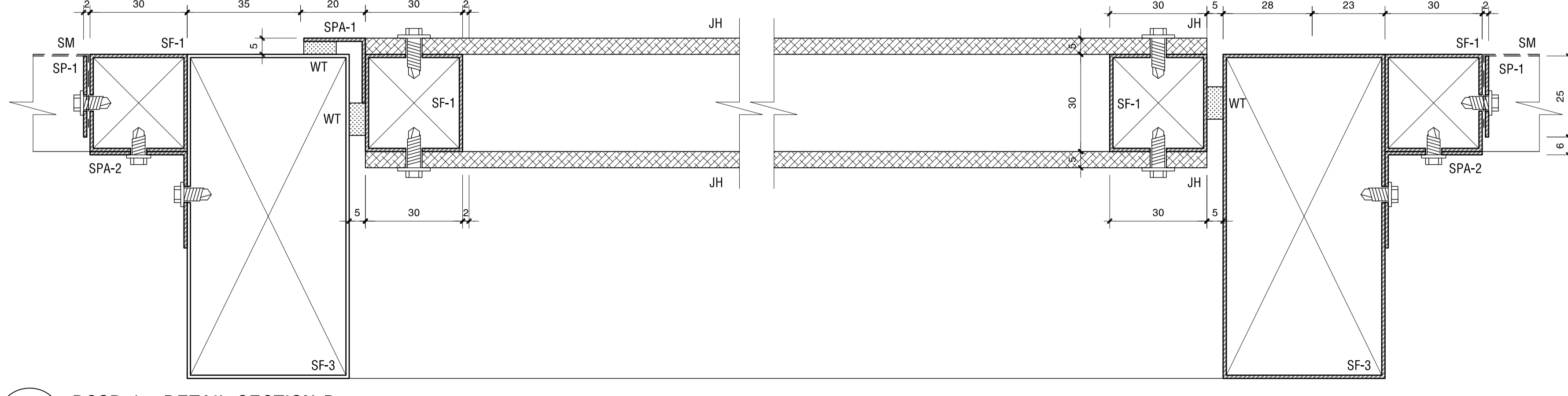
3.1 DOOR 1 - DETAIL SECTION A 1:1



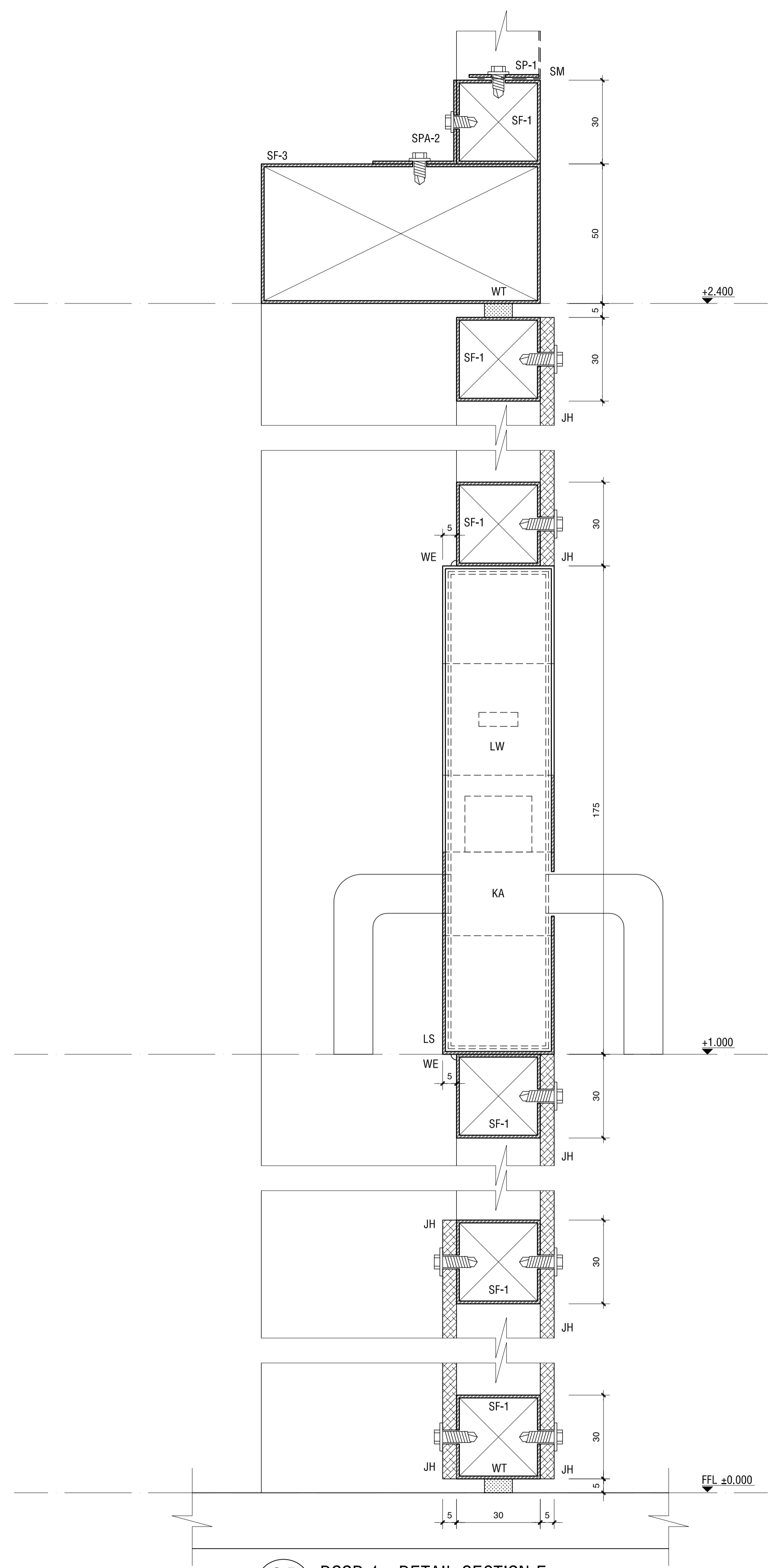
3.2 DOOR 1 - DETAIL SECTION B 1:1



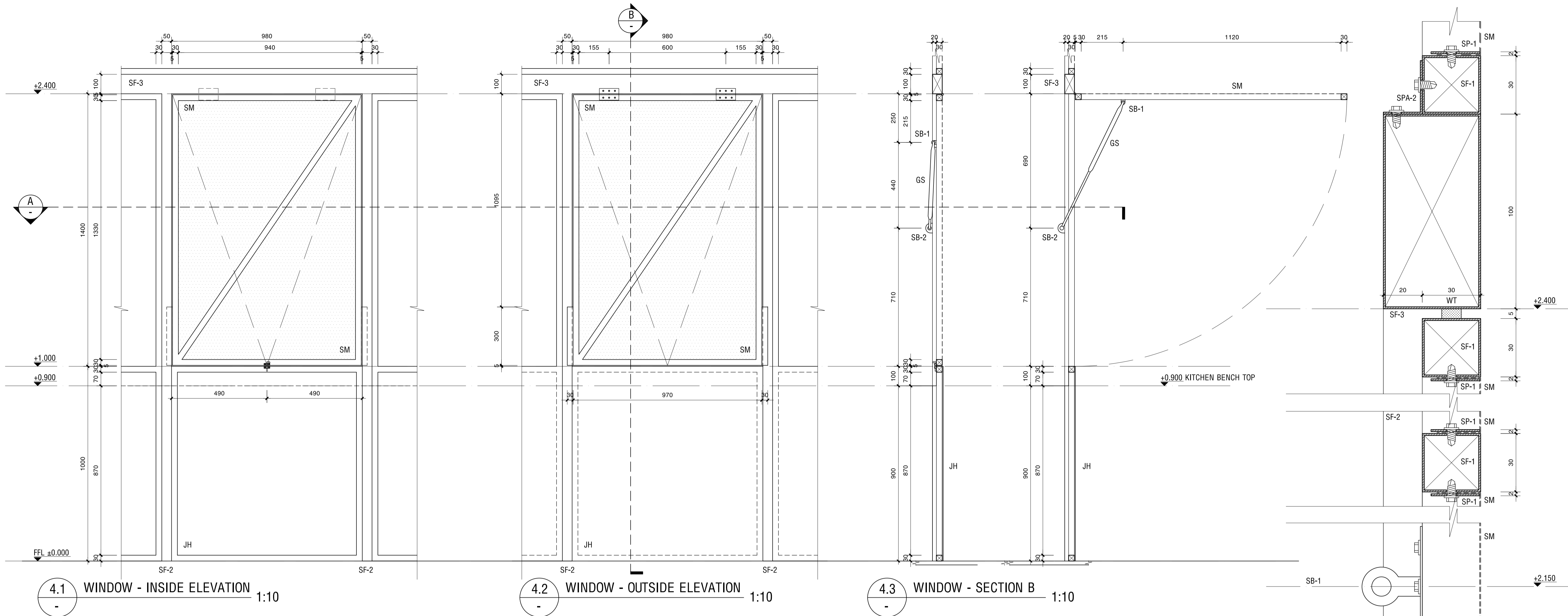
3.3 DOOR 1 - DETAIL SECTION C 1:1



3.4 DOOR 1 - DETAIL SECTION D 1:1



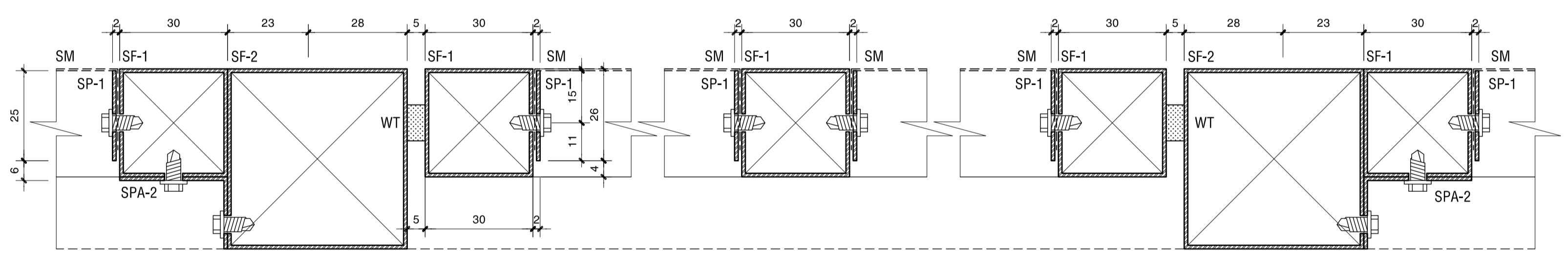
3.5 DOOR 1 - DETAIL SECTION E 1:1



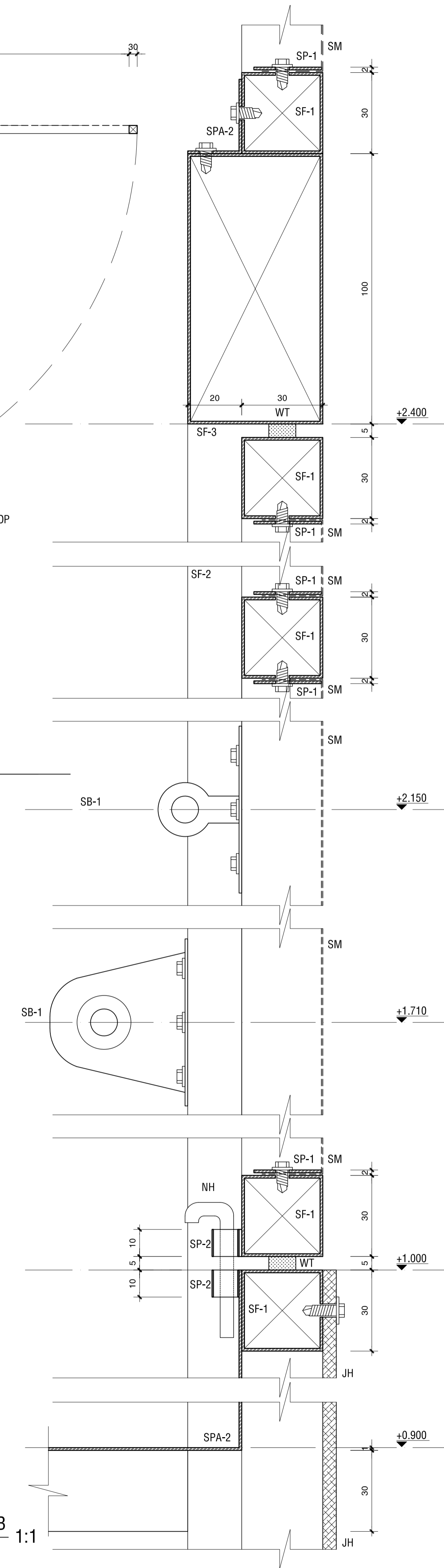
4.1 WINDOW - INSIDE ELEVATION 1:10

4.2 WINDOW - OUTSIDE ELEVATION 1:10

4.3 WINDOW - SECTION B 1:10



4.4 WINDOW - DETAIL SECTION A 1:1



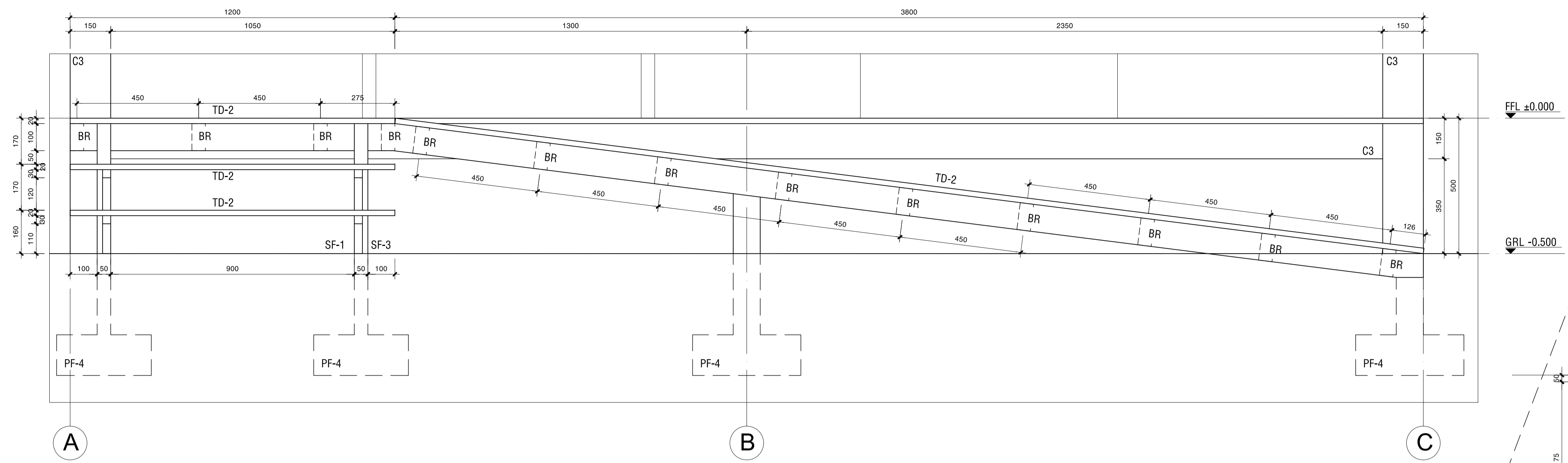
4.5 WINDOW - DETAIL SECTION B 1:1

MATERIAL LEGEND

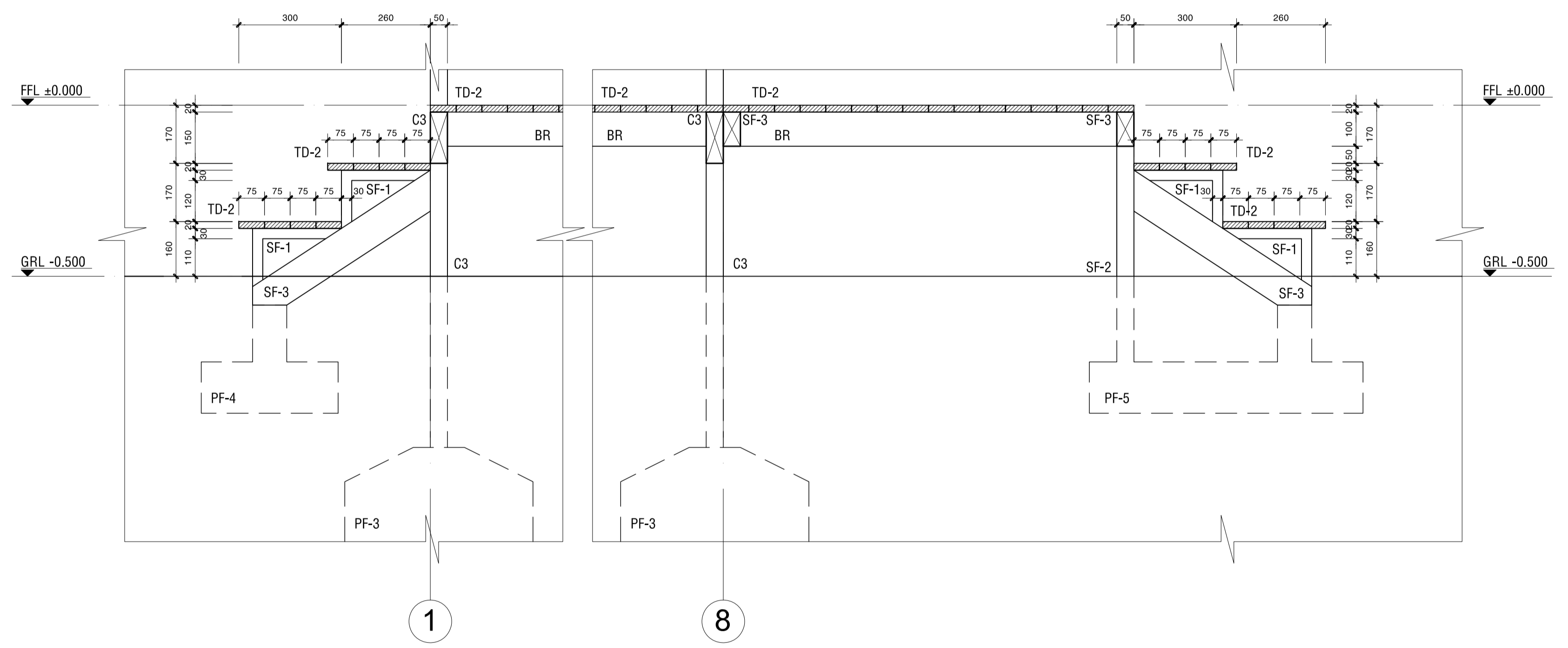
NUMBER	CODE	MATERIAL NAME	FINISHED COLOUR	COMPONENT	SUPPLIER
1	SF-1	30x30x1.6mm SHS GALVANIZED STEEL	MATTE GRAY	STEEL FRAMING PANEL	AustubeMills
2	SF-2	50x50x1.6mm SHS GALVANIZED STEEL	MATTE GRAY	WINDOW STUD	AustubeMills
3	SF-3	100x50x1.6mm RHS GALVANIZED STEEL	MATTE GRAY	STEEL FRAMING PANEL	AustubeMills
4	SM	(SEE BALA BALA RETRO-FIT SPECS)			
5	SP-1	25x1mm CA85T-G STEEL	MATTE GRAY	WASHER	BlueScopeSteel
6	SP-2	50x0.5mm CA85T-G STEEL	MATTE GRAY	HOOK	AustubeMills
7	SPA-1	20x20x1mm ANGLE CA85T-G STEEL	MATTE GRAY	DOOR STOPPER	AustubeMills
8	SPA-2	30x30x1mm ANGLE CA85T-G STEEL	MATTE GRAY	HINGES, BRACKET	AustubeMills
9	JH	2400x900x5mm HARDIEFLEX	WHITE	WALL CLADDING	JAMES HARDIE
10	WE	ELECTRIC WELD	MATTE GRAY	CONNECTION	BUNNING

DOORS AND WINDOW LEGEND

NUMBER	CODE	PART NAME	FINISHED COLOUR	COMPONENT	SUPPLIER
1	LS	BDS 3570 STEEL LOCK BOX	BRUSH FINISH	LOCK BOX	LSC
2	LW	PREMIER LOCKSMITH S6 GMK + KEY	MATTE FINISH	INSIDE LOCK BOX	LSC
3	KA	KABA STOREROOM DOOR LOCK NOCYL SSS	STAINLESS STEEL	HANDLE BOX	LSC
4	MC	MC'CALLUM 100X70 FP BB INTERFOLD HINGE SSS	STAINLESS STEEL	HINGES FOR DOORS & WINDOWS	LSC
5	NH	CONSTRUCTION 570 BDS CYCLINDER SCP	STAINLESS STEEL	LOCK BAR FOR WINDOW	LSC
6	GS	710X10X22mm GAS STRUT	BACK		DUNN&WATSON
7	SB-1	STRUT BRACKET MOUNT ON WINDOW	MATTE FINISH		DUNN&WATSON
8	SB-2	STRUT BRACKET MOUNT ON WALL FRAME	MATTE FINISH		DUNN&WATSON
9	WT	WEATHER TRIP	BLACK	AIR SEAL	BUNNING



5.5 EAST ELEVATION 1:10

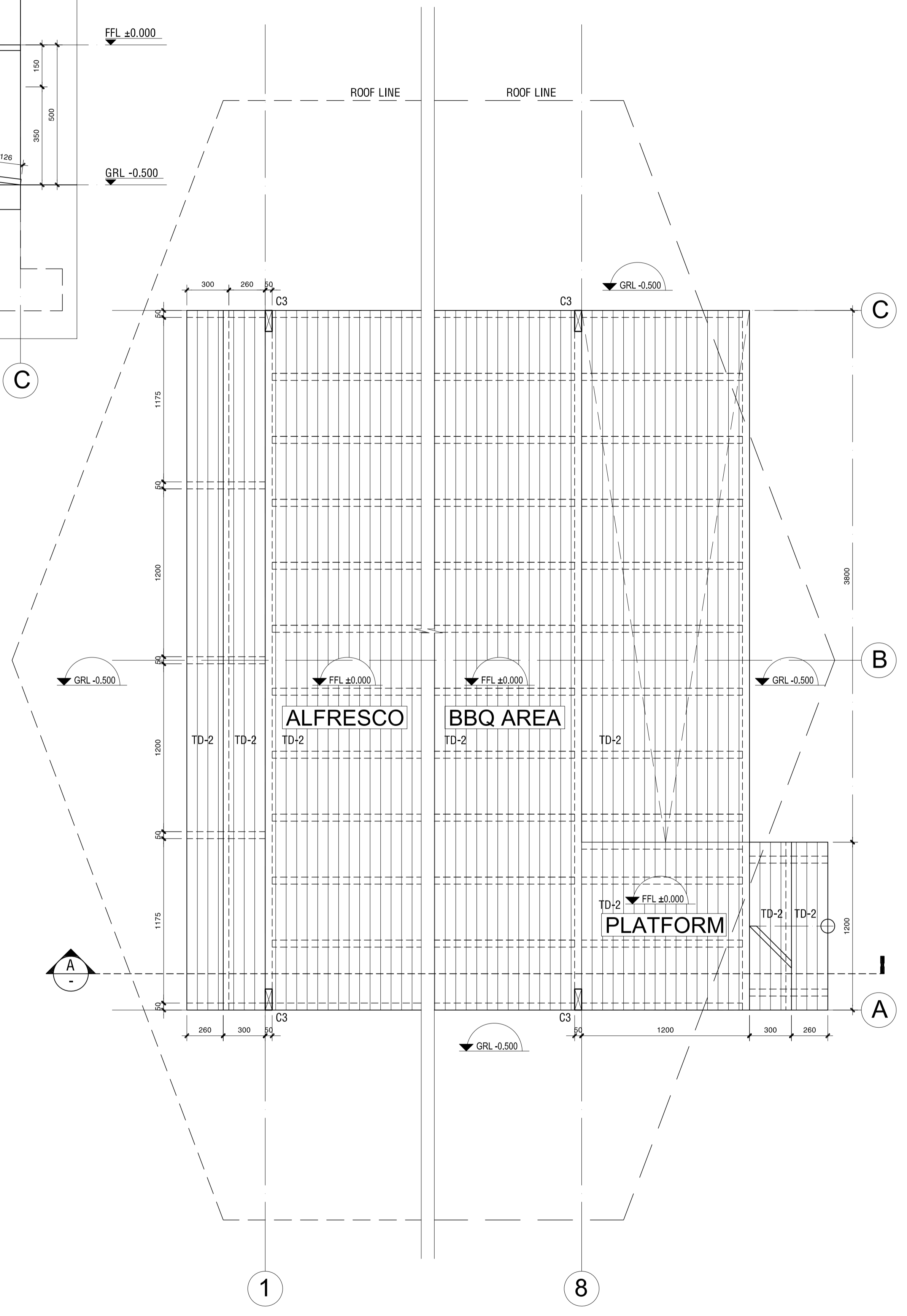


5.4 SECTION A - WEST STAIRS 1:10

5.3 SECTION A - EAST STAIRS AND RAMP 1:10

MATERIAL LEGEND

NUMBER	CODE	MATERIAL NAME	FINISHED COLOUR	COMPONENT	SUPPLIER
1	SF-1	30x30x1.6mm SHS GALVANIZED STEEL	MATTE GRAY	STEEL FRAMING PANEL	AustubeMills
2	SF-2	50x50x1.6mm SHS GALVANIZED STEEL	MATTE GRAY	WINDOW STUD	AustubeMills
3	SF-3	100x50x1.6mm RHS GALVANIZED STEEL	MATTE GRAY	STEEL FRAMING PANEL	AustubeMills
4	BR	100x50x1.6mm C450PLUS	MATTE GRAY	C BEAM, BEARER @450	AustubeMills
5	C3	150x50x2.0mm RHS GALVANIZED STEEL	MATTE GRAY	COLUMN, PORTAL FRAME	AustubeMills
6	TD-1	900x75x20mm TIMBER DECKING PANEL	OIL PAINTED	INSIDE TIMBER DECKING	BORAL
7	TD-2	900x75x20mm TIMBER DECKING PANEL	MARINE - OIL PAINTED	OUTSIDE TIMBER DECKING	BORAL
8	PF-3	CONCRETE FOOTING	UNDERGROUND	SEE ENGINEER REPORT	N/A
9	PF-4	CONCRETE FOOTING	UNDERGROUND	SEE ENGINEER REPORT	N/A
10	PF-5	CONCRETE FOOTING	UNDERGROUND	SEE ENGINEER REPORT	N/A



5.2 PLAN - WEST SIDE STAIRS 1:20

5.1 PLAN - EAST SIDE STAIRS AND RAMP 1:20